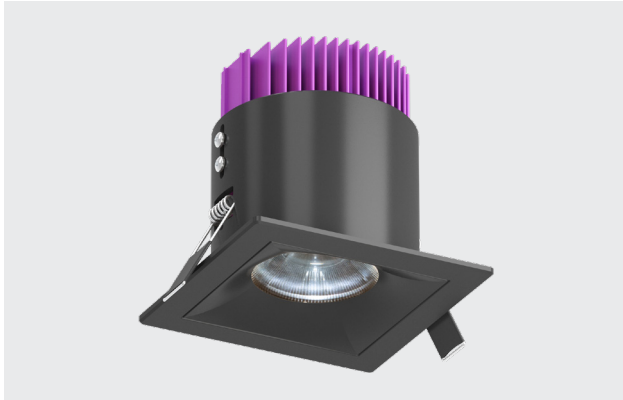


PROJECT:	SPECIFIER:	TYPE:	QTY:	DATE:
1	2	3	4	5
6	7	8	9	10
11				



TECH OPTIONS



DESCRIPTION

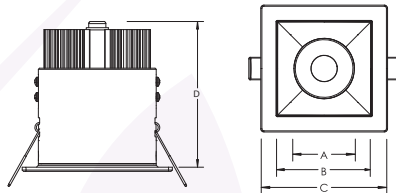
Architectural grade downlight with elegant, modern design. Milled aluminum housing, bezel and trim available in wide range of finishes. Deep recessed precision optic with sharp cutoff beam. Minimal spill light for high contrast between highlighted object and the environment. Available with a black reflector only. Optic available with multiple distribution options including 12° ultra narrow beam. Inherently protected luminaire with IC and non-IC options available. Thermal protection in case of improper insulation use. Extruded aluminum anodized heat sink. Positive retention springs allow for easy installation and prevent sagging.

FEATURES

- Housing & Trim:** milled aluminum, powder coat or bespoke plating finish
- Cutout:** round
- Optic:** deep recessed optic (clear polycarbonate)
- Reflector:** black polycarbonate
- Beams:** 10°, 25°, 35°, 55°
- Lumen Output (nominal):** up to 1100+ lm, 58.4 lm/w
- Mounting:** tool-free installation with positive retention springs, IC & Non-IC
- Heat Sink:** anodized aluminum
- LED:** PerfectWhite™ human centric, Lumenetix RGBW Static white CRI 90+ & 95+, Sunlike 97, *≤1x3 SDCM standard, ≤1x2 SDCM available upon request

DIMENSIONS

- Optic (A):** 1.90"
- Bezel (B):** 2.95"
- Flange (C):** 3.95"
- Height (D):** 3.62" - 4.85"
- Ceiling Opening:** 3.3"
- Ceiling Thickness:** ½" - 2" thk



WARRANTY 5 Year Limited Warranty (Covers Standard Components)

RATINGS & CERTS Made In USA with Global Components
Damp Location Rated



1: TYPE	SQ3-RD	Square Recessed Downlight
2: LED COLOR & CRI	LX90-RGBW* PC90-30K SW90-27K SW90-30K SW90-35K SW90-40K SW90-50K SW95-27K SW95-30K SW95-35K SW95-40K SL97-27K SL97-30K SL97-35K SL97-40K SL97-50K	Lumenetix RGB + 8000-1650K White 90+ 3000K PerfectWhite™ 90+ 2700K Static White 90+ 3000K Static White 90+ 3500K Static White 90+ 4000K Static White 90+ 5000K Static White 90+ 2700K Static White 95+ 3000K Static White 95+ 3500K Static White 95+ 4000K Static White 95+ 2700K Sunlike 97 3000K Sunlike 97 3500K Sunlike 97 4000K Sunlike 97 5000K Sunlike 97
3: LUMENS	06LM 08LM 11LM	600 lm 800 lm 1100 lm
4: VOLTAGE	U 1 2	120-277Vac 120Vac 277Vac

5: DIMMING / DRIVER	10V 10V1 10VMC1 10VZ1 ELV1 LTEA LUT1 LUTZ1* ELD1 ELDZ1 DMXZ1 DALIZ1 WATTZ1	<10% Dim 0-10V 1% Dim 0-10V 1% Dim 0-10V multi-channel for tunable white, warm dim & Lumenetix full color presets + tunable white 0.1% Dim 0-10V 1% Dim Leading & trailing edge (Triac/ ELV) 1% Dim Lutron Hi-Lume 2-Wire (120V only) 1% Dim Lutron Hi-Lume EcoSystem Soft-on & Fade Black 0.1% Dim Lutron Hi-Lume Premium EcoSystem Soft-On & Fade Black for static white & Lumenetix tunable white 1% Dim eldoLED ECODrive 0.1% Dim eldoLED SOLOdrive 0.1% Dim DMX for tunable, warm dim, & Lumenetix tunable full color and white 0.1% Dim Dali2 for tunable white, warm dim & Lumenetix tunable white 0.1% Dim Wattstopper DLM for Lumenetix tunable white
----------------------------	-----------------------------------------------------------------------------------------------------------------------------------------------------------------------------------------------------------------------	----------------------------------------------------------------------------------------------------------------------------------------------------------------------------------------------------------------------------------------------------------------------------------------------------------------------------------------------------------------------------------------------------------------------------------------------------------------------------------------------------------------------------------------------------------------------------------------------------------------------------------------------------------------------------------------------------

* <20W available for static white
** Drivers use logarithmic dimming curve as standard. For linear curve add "LIN" after Dimming Code

6: OPTIC	BNS BN BM BW	12° Recessed Optic 25° Recessed Optic 35° Recessed Optic 55° Recessed Optic
-----------------	---------------------------------------------------	--------------------------------------------------------------------------------------

7: REFLECTOR	BK	Black
---------------------	-----------	-------

8: BEZEL & TRIM FINISH	WH BK WB BZ LB CS CC BS BC BR NS NC	White Matte Black Matte White Flange, Black Bezel Oil-rubbed Bronze Brush Plated Light Bronze Plated Copper Satin Plated Copper Chrome Plated Black Satin Plated Black Chrome Plated Brass Plated Nickel Satin Plated Nickel Chrome Plated
-----------------------------------	----------------------------------------------------------------------------------------------------------------------------------------------------------	-----------------------------------------------------------------------------------------------------------------------------------------------------------------------------------------------------------------------------------------------------------------------------

*All plating finishes have protective coating

9: IC RATING (OPTIONAL)	IC	Insulated ceiling <small>*All luminaires are inherently protected, enclosed box not required for IC rating.</small>
--------------------------------	-----------	------------------------------------------------------------------------------------------------------------------------

10: ACCESSORY	HB EN FMC BB7 BB11 BB24 347STEP 480STEP	Ceiling plate with hanger bars Enclosed box with ceiling plate & bars Flex metal whip, 24-inch for AC power Battery Backup 7W for 90 mins Battery Backup 11W for 90 mins Battery Backup 24W for 90 mins 347-277Vac Step Down TF w/ 18" whip 480-277Vac Step Down TF w/ 18" whip
----------------------	----------------------------------------------------------------------------------------------------------------------	------------------------------------------------------------------------------------------------------------------------------------------------------------------------------------------------------------------------------------------------------------------------------------------------------

11: CONTROL	VIVE ANL AIRNL CAS ENT	Lutron Vive Acuity nLight Acuity nLight Air Casambi Ready Enlighted
--------------------	-----------------------------------------------------------------------	---------------------------------------------------------------------------------

*Code compliant with all U.S. requirements with applicable controls

LED OUTPUT INFO Insulated ceiling (IC) rating up to 17.2W

Static LED 90+ CRI @ 3000K

Ordering Code	Lumens, Nominal Delivered	Input Power, Nominal	Efficacy, Nominal
05LM	562 lm	9.83W	57.2 lm/W
08LM	786 lm	13.76W	57.2 lm/W
11LM	1,129 lm	19.32W	58.4 lm/W

PerfectWhite LED 90+ CRI @ 3000K

Ordering Code	Lumens, Nominal Delivered	Input Power, Nominal	Efficacy, Nominal
05LM	585 lm	13.68W	42.8 lm/W
08LM	839 lm	19.20W	43.7 lm/W

Sunlike LED 97 CRI @ 3000K (nominal)

Ordering Code	Lumens, Nominal Delivered	Input Power, Nominal	Efficacy, Nominal
04LM	441 lm	10.06W	43.9 lm/W
06LM	618 lm	14.08W	43.9 lm/W
08LM	892 lm	19.89W	44.9 lm/W

**LM Multiplier 1
LED CRI**

SW90: 1.00
SW95: 0.92
SL/PC: 0.85

**LM Multiplier 2
LED Color**

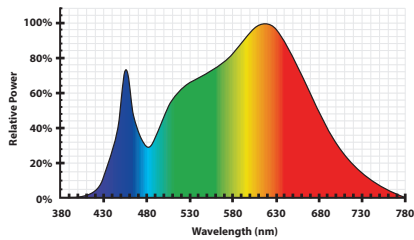
2700K: 0.96
3000K: 1.00
3500K: 1.03
4000K: 1.05
5000K: 1.07

**LM Multiplier 3
Optic**

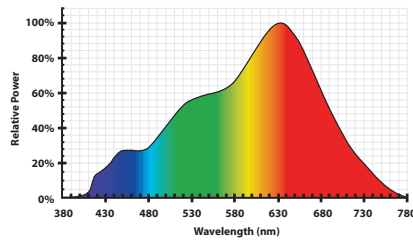
BNS: 0.90

Calculated Delivered Lumens = Delivered Lumen Value x LED CRI x LED Color

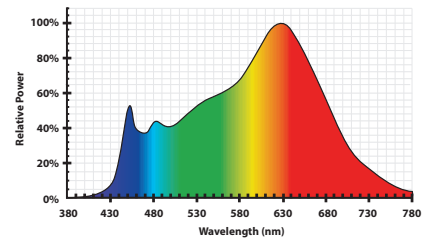
SPECTRAL POWER DISTRIBUTION



Standard LED 90+ CRI @ 3000K



SunLike LED 97 CRI @ 3000K



PerfectWhite LED 90+ CRI @ 3000K