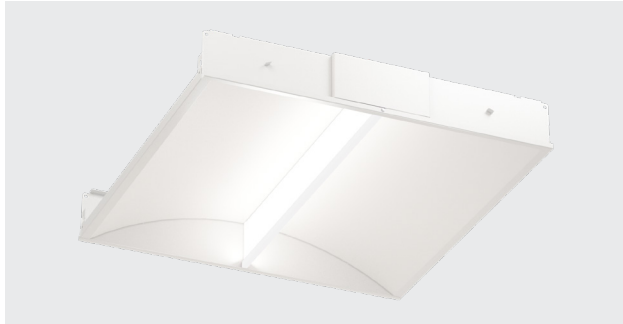


PROJECT: \_\_\_\_\_ SPECIFIER: \_\_\_\_\_ TYPE: \_\_\_\_\_ QTY: \_\_\_\_\_ DATE: \_\_\_\_\_

1 \_\_\_\_\_ 2 \_\_\_\_\_ 3 \_\_\_\_\_ 4 \_\_\_\_\_ 5 \_\_\_\_\_ 6 \_\_\_\_\_ 7 \_\_\_\_\_ 8 \_\_\_\_\_



### TECH OPTIONS



### SPECIFICATIONS

Specification grade recessed grid luminaire with elegant vertical light guide, providing indirect lighting with no glare. Edge-lit light guide with sleek 3/8 inch extrusion. Matte white powder coated steel and customizable accent bar option. Discerning solution for suspended ceiling applications.

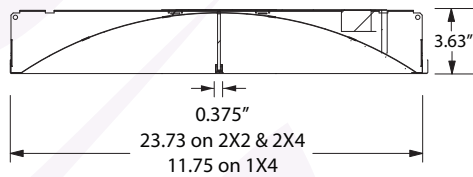
### HUMAN CENTRIC TECH

Human centric option available to achieve a specific Melanopic Ratio (MR). OPUS delivers high MR in warm CCTs for healthy lighting that is comfortable, invigorating, and renders vibrant colors via Verve LED chip, enabling typical Melanopic Ratios to be specified. Natural skin tones and excellent red (RA>90). Enhanced MR provides healthy daytime lighting with warmer CCTs.

### FEATURES

- Housing:** matte white powder coated steel
- Footprint:** 1'x4', 2'x2', 2'x4' recessed grid
- Optic:** elegant vertical light guide for no glare, accent bar color option
- Beam:** double asymmetric wide
- Lumen Output (nominal):** up to 6400 lm, 110 lm/W
- Mounting:** Type IC, side clips integrated
- LED:** Verve human centric, Static white CRI 80+ & 90+

### DIMENSIONS



**WARRANTY** 5 Year Limited Warranty (Covers Standard Components)

### RATINGS & CERTS

Made In USA with Global Components  
Damp Location Rated



### 1: TYPE

**CL24-RL** New 2x4  
**CL22-RL** New 2x2  
**CL14-RL** New 1x4

### 2: LED COLOR & CRI

**SW80-27K** 2700K Static White 80+  
**SW80-30K** 3000K Static White 80+  
**SW80-35K** 3500K Static White 80+  
**SW80-40K** 4000K Static White 80+  
**SW80-50K** 5000K Static White 80+  
**SW90-27K** 2700K Static White 90+  
**SW90-30K** 3000K Static White 90+  
**SW90-35K** 3500K Static White 90+  
**SW90-40K** 4000K Static White 90+  
**SW90-50K** 5000K Static White 90+  
**VV90-30K** 3000K Verve 90+  
**VV90-35K** 3500K Verve 90+  
**VV90-40K** 4000K Verve 90+  
**VV90-50K** 5000K Verve 90+  
**TW90-5027K\*** Tunable White 5000 – 2700K 90+

*\*Tunable white only available in 2x2 version*

### 3: LUMENS

**21LM** 2100 lm  
**30LM** 3000 lm  
**35LM** 3500 lm  
**40LM\*** 4000 lm  
**50LM** 5000 lm  
**60LM** 6000 lm  
**64LM** 6400 lm

*\*2x2 max 4000 lm*

### 4: VOLTAGE

**U** 120-277Vac  
**3** 347Vac  
**4** 347- 480Vac

### 5: DIMMING / DRIVER

**10V** Dim 0-10V dimming to <10%  
**10V1** 1% Dim 0-10V  
**10VMCZ1** 0.1% Dim 0-10Vx2 dim-to-off for tunable white  
**LDE5** 5% Dim Lutron Digital Ecosystem  
**LUT1** 1% Dim Lutron Hi-Lume EcoSystem Soft-on & Fade Black  
**LUTZ1** 0.1% Dim Lutron Hi-Lume Premium EcoSystem Soft-on & Fade Black  
**ELDZ1** 0.1% Dim eldoLED SOLOdrive dim-to-off  
**DAL1** 1% Dim DALI  
**ELDZDALZ1** 0.1% Dim-to-Dark DALI eldoLED SOLOdrive

*\*Driver uses logarithmic dimming curve as standard. For linear curve add "LIN" after Dimming Code*

### 6: OPTIC

**WH** Light Guide, Matte White Accent Bar  
**BK** Light Guide, Matte Black Accent Bar  
**SB** Light Guide, Sky Blue Accent Bar  
**MC** Light Guide, Graphite Accent Bar  
**LL** Light Guide, Lilac Accent Bar  
**XX** Custom

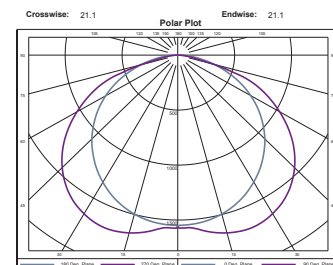
### 7: CONTROL

**VIVE** Integrated Lutron VIVE  
**ANL** Integrated Acuity nLight  
**AIRNL** Integrated Acuity nLight Air  
**CAS** Casambi Ready  
**ENT** Integrated Enlighted

### 8: ACCESSORIES

**BB4** Battery Backup 4W for 90 mins  
**BB8** Battery Backup 8W for 90 mins  
**BB12** Battery Backup 12W for 90 mins  
**347STEP** Separate 347-277Vac Step Down Transformer  
**480STEP** Separate 480-277Vac Step Down Transformer

### BEAM DISTRIBUTION



## LED OUTPUT INFO

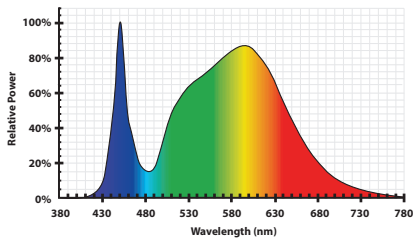
### Standard White LED 80+ CRI @ 4000K (nominal)

Ordering Code	Lumens, Nominal Delivered	Input Power, Nominal	Efficacy, Nominal
21LM	2,132 lm	19.3W	110.25 lm/W
30LM	3,084 lm	28W	110.25 lm/W
35LM	3,538 lm	32.1W	110.25 lm/W
40LM	4,037 lm	36.6W	110.25 lm/W
50LM	4,990 lm	45.3W	110.25 lm/W
60LM	6,033 lm	54.7W	110.25 lm/W

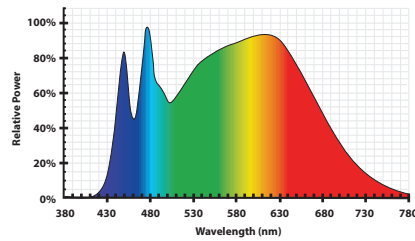
### Verve Human Centric LED 90+ CRI @ 4000K (nominal)

Ordering Code	Lumens, Nominal Delivered	Input Power, Nominal	Efficacy, Nominal
21LM	2,101 lm	29.3W	72 lm/W
30LM	3,096 lm	43.2W	72 lm/W
35LM	3,538 lm	49.4W	72 lm/W
40LM	3,980 lm	55.5W	72 lm/W
50LM	4,975 lm	69.4W	72 lm/W

## SPECTRAL POWER DISTRIBUTION



Standard LED 80+ CRI @ 4000K



Verve LED 90+ CRI @ 4000K