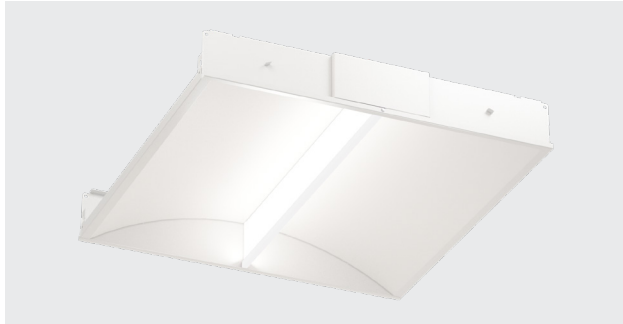


PROJECT: _____ SPECIFIER: _____ TYPE: _____ QTY: _____ DATE: _____

1 _____ 2 _____ 3 _____ 4 _____ 5 _____ 6 _____ 7 _____ 8 _____



TECH OPTIONS



SPECIFICATIONS

Specification grade recessed grid luminaire with elegant vertical light guide, providing indirect lighting with no glare. Edge-lit light guide with sleek 3/8 inch extrusion. Matte white powder coated steel and customizable accent bar option. Discerning solution for suspended ceiling applications.

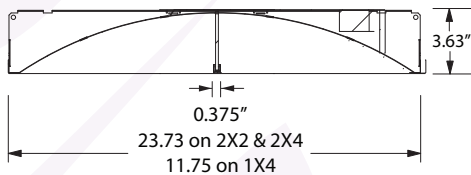
HUMAN CENTRIC TECH

Human centric option available to achieve a specific Melanopic Ratio (MR). OPUS delivers high MR in warm CCTs for healthy lighting that is comfortable, invigorating, and renders vibrant colors via Verve LED chip, enabling typical Melanopic Ratios to be specified. Natural skin tones and excellent red (RA>90). Enhanced MR provides healthy daytime lighting with warmer CCTs.

FEATURES

- Housing:** matte white powder coated steel
- Footprint:** 1'x4', 2'x2', 2'x4' recessed grid
- Optic:** elegant vertical light guide for no glare, accent bar color option
- Beam:** double asymmetric wide
- Lumen Output (nominal):** up to 6400 lm, 110 lm/W
- Mounting:** Type IC, side clips integrated
- LED:** Verve human centric, Static white CRI 80+ & 90+

DIMENSIONS



WARRANTY 5 Year Limited Warranty (Covers Standard Components)

RATINGS & CERTS

Made In USA with Global Components
Damp Location Rated



1: TYPE

CL24-RL New 2x4
CL22-RL New 2x2
CL14-RL New 1x4

2: LED COLOR & CRI

SW80-27K 2700K Static White 80+
SW80-30K 3000K Static White 80+
SW80-35K 3500K Static White 80+
SW80-40K 4000K Static White 80+
SW80-50K 5000K Static White 80+
SW90-27K 2700K Static White 90+
SW90-30K 3000K Static White 90+
SW90-35K 3500K Static White 90+
SW90-40K 4000K Static White 90+
SW90-50K 5000K Static White 90+
VV90-30K 3000K Verve 90+
VV90-35K 3500K Verve 90+
VV90-40K 4000K Verve 90+
VV90-50K 5000K Verve 90+
TW90-5027K Tunable White 5000 – 2700K 90+

3: LUMENS

21LM 2100 lm
25LM* 2500 lm
30LM 3000 lm
35LM 3500 lm
40LM** 4000 lm
50LM 5000 lm
55LM*** 5500 lm
60LM 6000 lm
64LM 6400 lm

**2x2 tunable white lumen max
**2x2 static white max; 1x4 & 2x4 tunable white max
***1x4 static white max*

4: VOLTAGE

U 120-277Vac
3 347Vac
4 347- 480Vac

5: DIMMING / DRIVER

10V Dim 0-10V dimming to <10%
10V1 1% Dim 0-10V
10VMCZ1 0.1% Dim 0-10Vx2 dim-to-off for tunable white
LDE5 5% Dim Lutron Digital Ecosystem
LUT1 1% Dim Lutron Hi-Lume EcoSystem Soft-on & Fade Black
LUTZ1 0.1% Dim Lutron Hi-Lume Premium EcoSystem Soft-on & Fade Black
ELDZ1 0.1% Dim eldoLED SOLOdrive dim-to-off
DAL1 1% Dim DALI
DALMCZ1 0.1% dim-to-dark DALI2 DT8 dual channel for tunable white
ELDZDALZ1 0.1% Dim-to-Dark DALI eldoLED SOLOdrive

**Driver uses logarithmic dimming curve as standard. For linear curve add "LIN" after Dimming Code*

6: OPTIC

WH Light Guide, Matte White Accent Bar
BK Light Guide, Matte Black Accent Bar
SB Light Guide, Sky Blue Accent Bar
MC Light Guide, Graphite Accent Bar
LL Light Guide, Lilac Accent Bar
XX Custom

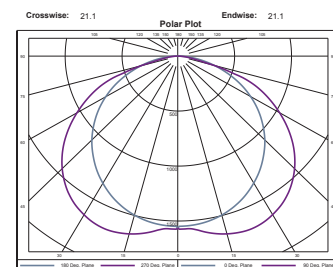
7: CONTROL

VIVE Integrated Lutron VIVE
ANL Integrated Acuity nLight
AIRNL Integrated Acuity nLight Air
CAS Casambi Ready
ENT Integrated Enlighted

8: ACCESSORIES

BB4 Battery Backup 4W for 90 mins
BB8 Battery Backup 8W for 90 mins
BB12 Battery Backup 12W for 90 mins
347STEP Separate 347-277Vac Step Down Transformer
480STEP Separate 480-277Vac Step Down Transformer

BEAM DISTRIBUTION



LED OUTPUT INFO

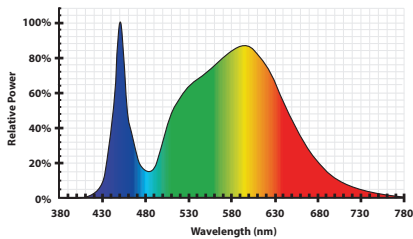
Standard White LED 80+ CRI @ 4000K (nominal)

Ordering Code	Lumens, Nominal Delivered	Input Power, Nominal	Efficacy, Nominal
21LM	2,132 lm	19.3W	110.25 lm/W
30LM	3,084 lm	28W	110.25 lm/W
35LM	3,538 lm	32.1W	110.25 lm/W
40LM	4,037 lm	36.6W	110.25 lm/W
50LM	4,990 lm	45.3W	110.25 lm/W
60LM	6,033 lm	54.7W	110.25 lm/W

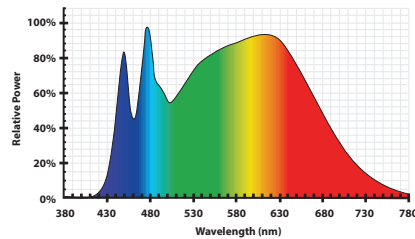
Verve Human Centric LED 90+ CRI @ 4000K (nominal)

Ordering Code	Lumens, Nominal Delivered	Input Power, Nominal	Efficacy, Nominal
21LM	2,101 lm	29.3W	72 lm/W
30LM	3,096 lm	43.2W	72 lm/W
35LM	3,538 lm	49.4W	72 lm/W
40LM	3,980 lm	55.5W	72 lm/W
50LM	4,975 lm	69.4W	72 lm/W

SPECTRAL POWER DISTRIBUTION



Standard LED 80+ CRI @ 4000K



Verve LED 90+ CRI @ 4000K